

UNIC



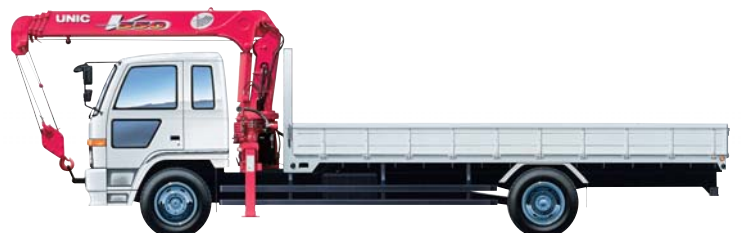
V550

Truck-Mounted UNIC Crane UR-V550 SERIES

For Heavy-Duty truck.

maximum lifting capacity. **5,050 kg.**

15.1 m. maximum hook height
(5 section boom).

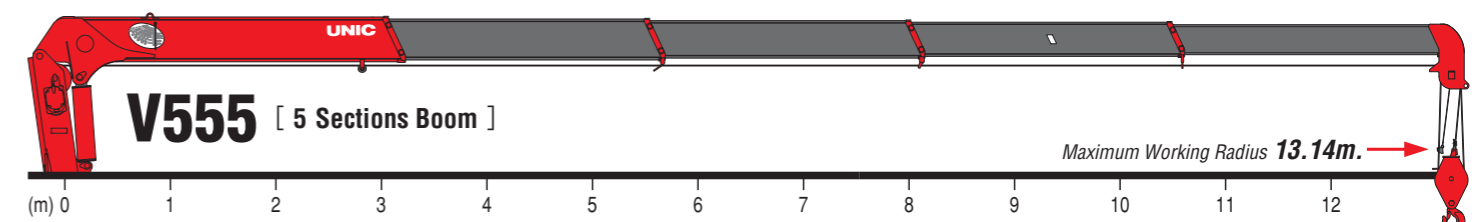


FURUKAWA UNIC CORPORATION

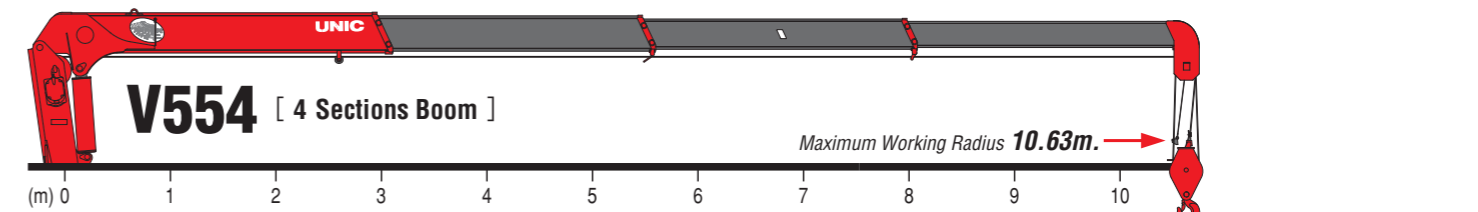
UNIC Crane, High safety and reliability.



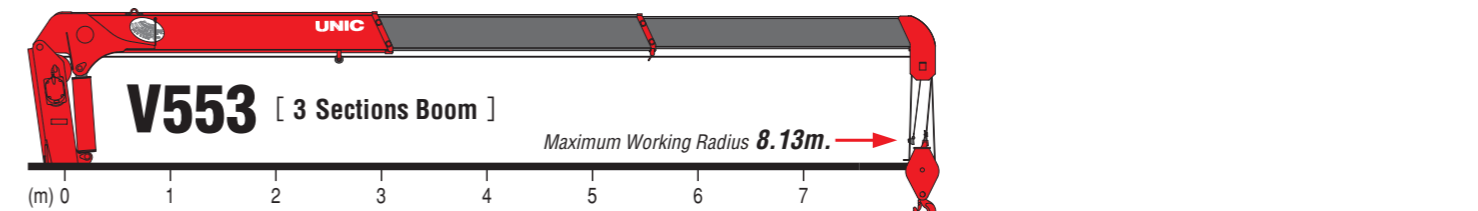
RATED LOADS [Unit : kg]



Working Radius (m)	2.0	2.4	2.9	3.5	4.0	4.5	5.0	5.5	6.0	7.0	8.0	9.0	10.0	11.0	12.0	13.14	
	5050	5050	3950	3200 (3.54)													
		4050	3950	3250	2750	2450	2150	1900	1700 (5.94)								
				3050	3050	2750	2450	2150	1900	1650	1350	1100 (8.34)					
					1850	1850	1750	1600	1450	1250	1050	900	800	750 (10.74)			
						1350	1350	1300	1200	1100	950	850	750	650	600	550	500

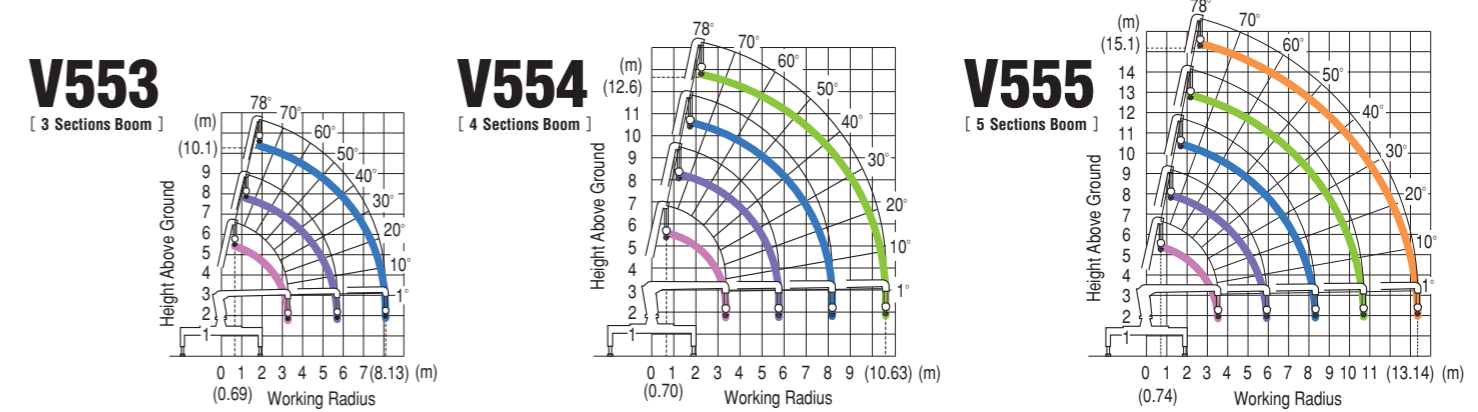


Working Radius (m)	2.2	2.5	2.9	3.5	4.1	4.5	5.0	5.5	6.0	7.0	8.0	9.0	10.63	
	5050	4550	4050	3500 (3.36)										
	4050	4050	4050	3350	3050	2600	2300	1950	1800 (5.79)					
				3050	3050	2600	2300	1950	1750	1450	1150 (8.21)			
					2050	2050	2050	1850	1700	1500	1250	1100	1000	850



Working Radius (m)	2.2	2.5	2.9	3.5	4.1	4.5	5.0	6.0	7.0	8.13
	5050	4550	4050	3500 (3.30)						
	4050	4050	4050	3350	3050	2600	2300	1900 (5.73)		
				3050	3050	2600	2300	1750	1450	1250

WORKING RANGE



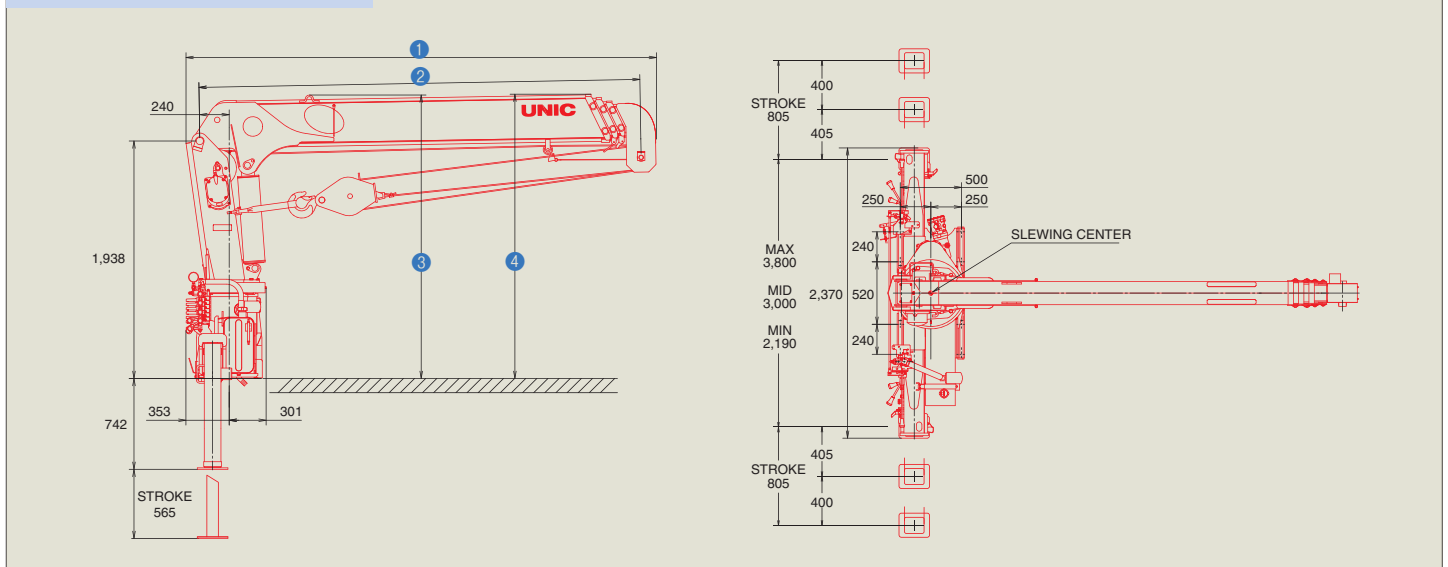
Specifications Table

UR-V550 series	UR-V555	UR-V554	UR-V553
Maximum Lifting Capacity	5,050 kg. at 2.4 m.	5,050 kg. at 2.2 m.	5,050 kg. at 2.2 m.
Maximum Hook Height	Max. 15.1 m.	Max. 12.6 m.	Max. 10.1 m.
Maximum Working Radius	Min. 0.74 m. to Max. 13.14 m.	Min. 0.70 m. to Max. 10.63 m.	Min. 0.69 m. to Max. 8.13 m.
Boom Length	Min. 3.78 m. to Max. 13.38 m.	Min. 3.60 m. to Max. 10.87 m.	Min. 3.54 m. to Max. 8.37 m.
Boom Sections	5	4	3
Boom Raising Angle	Min. 1° to Max. 78°	Min. 1° to Max. 78°	Min. 1° to Max. 78°
Slewing Angle	360° Continuous	360° Continuous	360° Continuous

Crane Mounting Dimensions

Crane Model	①	②	③	④
UR-V555	4,062	Min. 3,780 ~ Mid. 6,180 ~ 8,580 ~ 10,980 ~ Max. 13,380	2,359	2,367
UR-V554	3,840	Min. 3,600 ~ Mid. 6,030 ~ 8,450 ~ Max. 10,870	2,313	2,320
UR-V553	3,780	Min. 3,540 ~ Mid. 5,970 ~ Max. 8,370	2,313	2,320

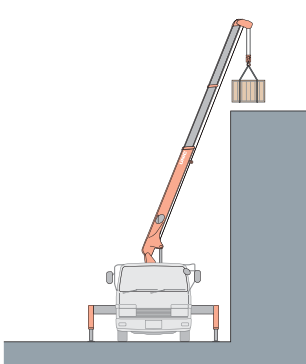
Drawing: UR-V554 (Unit: mm)



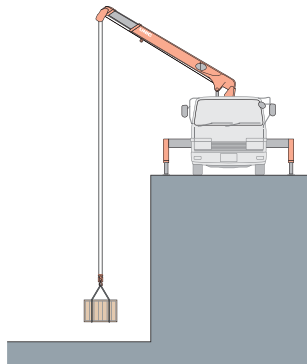
UNIC Crane: High, low or tight, they're safe, sure, dependable.

High or low tight, UNIC straight-boom wire-rope cranes match the task.

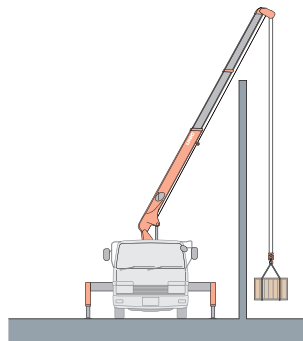
They're great high-lift performers, Lifting loads over walls is also no problem with their unrestricted raising and lowering. In deep-hole jobs they're strong, and accurate. Many extra safety features, too.



Buildings, walls, whatever, with UNIC wire-rope cranes you get precise high-lift placement and safe, sure operation. Their dependability is all in their strength and design, original UNIC features.



Higher performance, too, at lower depths. UNIC wire-rope cranes handle heavy loads in deep-hole jobs with accuracy and stability. A wide range of models assures versatile matching to job requirements.



Tight places are the right places for UNIC wire-rope cranes. In any operating situation their strong steel cables mean extra dependability and safety. High, low, or tight, UNIC wire-rope cranes are always right.



NOTE

- Rated loads shown in the chart are based on the crane strength with the outriggers fully extended on a firm level ground and on the actual working radius including the deflection of boom.
- The weights of hook (50 kg.), slings, and any accessories attached to the boom or loadline must be deducted from the above capacities in the chart.
- Capacities shown must reduce in accordance with vehicle weight and loaded condition of truck, crane mounting position, and operating speed.
- The figures in relation to the speed are on the basis of no-load running at rated oil flow conditions.
- In accordance with our policy of constant product improvement, all specifications are subject to change without notice or obligations.



HOOK
+
SLINGS
+
LOAD
=
RATED LOAD

FURUKAWA UNIC CORPORATION

5-3, Nihonbashi 1-chome, Chuo-ku, TOKYO 103-0027 JAPAN

Phone: (81-3) 3231-8613 / Facsimile: (81-3) 3231-8261

URL <http://www.furukawaunic.co.jp/>